

Name: \_\_\_\_\_

## FINAL EXAM REVIEW- 7TH GRADE SCIENCE IB CLASS

### 3rd Quarter Review Questions

1-6/1-7

1. What is the equation for photosynthesis?

2. What are the products of respiration?

\_\_\_\_\_, \_\_\_\_\_, and \_\_\_\_\_ are important biomolecules for living things.

3. Which part of the leaf is responsible for absorbing the sun's energy?

4. What are the reactants in photosynthesis? \_\_\_\_\_ and \_\_\_\_\_

5. What are the products from photosynthesis? \_\_\_\_\_ and \_\_\_\_\_

6. Glucose is a type of \_\_\_\_\_.

1-5

7. Which of these traits can be influenced by the environment? Eye color, earlobes (attached or hanging), length of thumb, body weight?

8. Two identical twins demonstrate different behaviors and personalities due to:

9. Which is an example of a genetically influenced trait? Location, having a horn, amount of exercise, amount of education

1-4

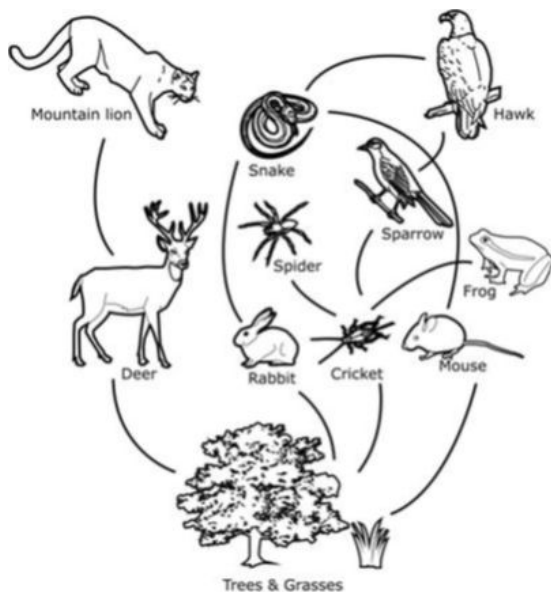
10. A peacock showing off his feathers to a female is an example of \_\_\_\_\_ behavior.

11. Pollination is when the pollen is moved from the \_\_\_\_\_ (male part) to the \_\_\_\_\_ (female part).

### 4th quarter Review Questions

#### Ecosystems

2-1



12. What is the role of mountain lions in this ecosystem?

13. What group of organisms are missing from this food web?

14. Which organisms in the food web are competing for the same resource?

15. Hunting has just started to be allowed in the ecosystem above, and humans are killing many of the deer. A reduction in the deer population will affect the amount of energy this ecosystem is able to provide for which of the following organisms?

16.If additional sparrows were introduced into this ecosystem, there would most likely be an immediate decrease in the:

17.Which of the following is NOT directly a limiting factor of the frog population? increase in pesticide use harms frogs the amount of crickets available to eat increase in the hawk population space available for egg-laying spots

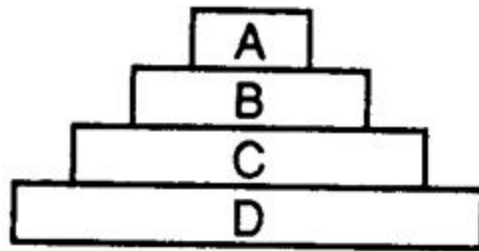
18.Which of the following could possibly increase the total amount of energy the sparrow population receives within the food chain?

2-2

10..What is the main role of decomposers in an ecosystem?

20.Four levels of an energy pyramid are represented. Which statement about this energy pyramid is correct? Organisms in level A receive their energy directly from the sun.

Organisms from level C are carnivores. Organisms from level C receive their energy directly from level B. Organisms in level D receive their energy directly from the sun.



2-5

21..Maintaining biodiversity is important because biodiversity

22.Biodiversity can be maintained by protecting

23.Which of these will not help maintain a healthy amount of biodiversity?

growing a variety of plants on a farm

protecting all species in an ecosystem

protecting all habitats in an ecosystem

removing an important predator from an ecosystem

24.Which ecosystems is richest in biodiversity?

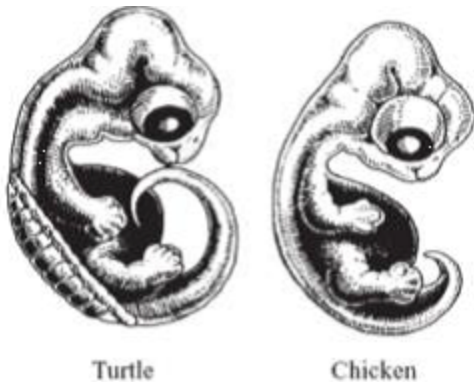
4-6

25.Over the last several decades, bacteria that cause illness in humans have become more difficult to kill with antibiotics - medicines that kill bacteria. The ability of bacteria to develop this resistance to antibiotics is an example of:

25.The cows in a rancher's herd of cattle have been selectively bred to produce milk. What will cause the next generation of cows to receive the quantities of milk?

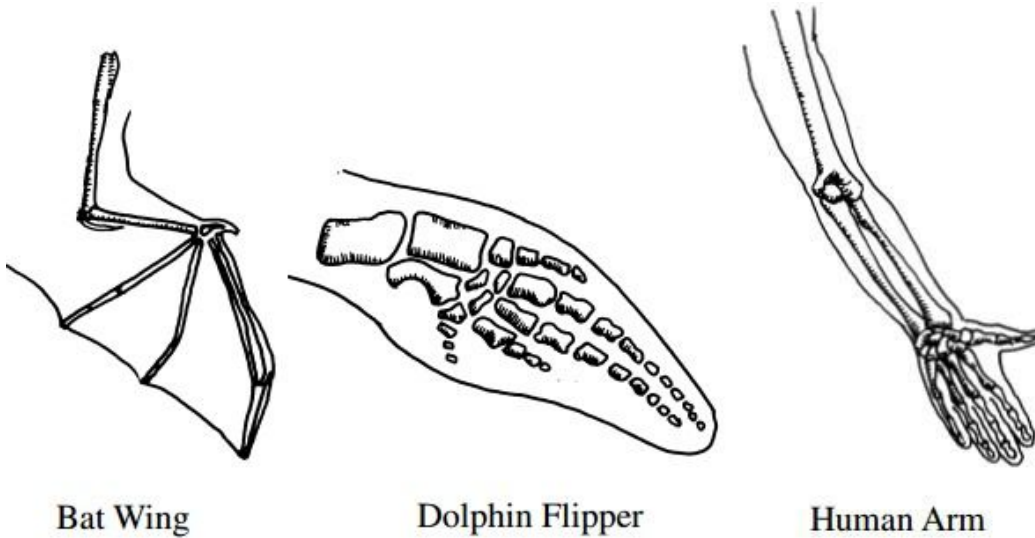
27.A population of birds eat green moths in a forest. Every so often the green moths have a brown moth. The brown are more quickly eaten by birds. Now increased brown particle pollution is turning the forest brown. What is most likely to happen?

4-3



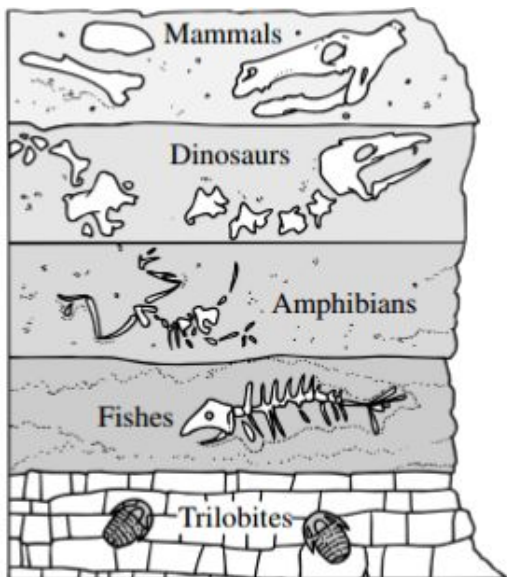
28. These drawings show a turtle embryo and a chicken embryo. What conclusion is supported by the similarities between these embryos?

4-2



29. These pictures show bone structures in three animals. The similarity in structure of the bones in these animals suggests that

4-1



30. This diagram represents a cross-section of a cliff. It shows several rock layers containing fossils. Which of the following layers of rock is most likely the youngest

Describe a human activity that may result in pollution. Suggest a way in which this pollution could be prevented.

Outline the problems associated with the disposal of waste. Suggest two ways of minimizing waste.

How does the variety of bird's beaks help support the theory of natural selection?

Compare and contrast natural selection with selective breeding.

What are some advantages to selectively breeding dogs?